



United Nations
Educational, Scientific and
Cultural Organization



Member of the
UNESCO Creative Cities
Network since 2010



ICHEON
APEC 2010



Icheon
CERAMIC

COLLECT 2021

ICHEON CERAMIC

collect  Presented
by the
Crafts Council



ICHEON CERAMIC



ICHEON CERAMIC
KOREAN CRAFTS

ICHEON CERAMIC

COLLECT 2021

시장님 인사말씀

천년의 도자 역사를 자랑하는 이천은 풍부한 자원과 인적 인프라를 가진
예로부터 왕실 납품 도자기를 제작하던 공방이 즐비했던 곳입니다.
오랜 역사와 전통을 바탕으로 수십 년째 한길만을 걸으며 고유의 도자문화 계승과 발전에
힘써온 도자 명장 그리고 전통기술에 현대적 감각을 가미한 수공예 도자기를 제작하는
공방 400곳이 어우러져 대한민국 더 나아가 아시아의 대표 도자도시로 평가받고 있습니다.
세계 현대 미술계의 중심에 있는 2021 런던 콜렉트에 참여하여 아름다운 대한민국,
이천 도자기를 선보이게 되어 대단히 기쁘게 생각하며 2021년 이천시가 소개하는 작품들은
청자, 분청, 백자 그리고 옹기 등 한국전통도자기법을 이용한 원로 도예가들의 대작은 물론
전통과 현대의 조화미를 느낄 수 있는 작가들의 작품들로 구성하였습니다. 천년을 지켜온
그리고 천년을 이어갈 이천 도자기의 아름다움을 느끼실 수 있기를 바랍니다.

이천시장
엄 태 준

GREETINGS FROM THE MAYOR OF ICHEON

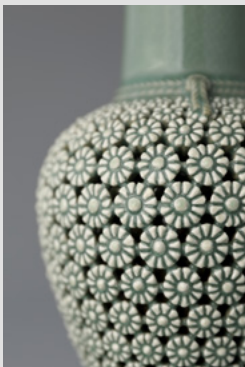
Boasting a lengthy history, Icheon has produced royal pottery since
ancient times, now symbolizing our abundant resources and highly
advanced infrastructure. Located in the heart of Icheon, the Korean
Ceramic Masters have proudly dedicated their lives to transmitting and
cultivating the long history, the living tradition and unique culture of
Korean ceramics. With approximately 400 studios spread over the city,
the ceramicists have maintained the practice of our ancestors, whilst
also imbuing their handicrafts with creative and modern sensibilities.
The city has become a pillar of ceramic creation thanks to their efforts.

The works are comprised of both the influence of the Korean masters
and traditional approaches to Korean craft techniques: celadon,
buncheon, onggi and white porcelain. There are also the works of
other artists that explore a harmony between tradition and modernity.

I hope that you can enjoy the experience of the beautiful Icheon pottery
that has been crafted for the past 1000 years and that will continue for
another 1000 years to come.

Mayor of Icheon
Eam Tai-joon

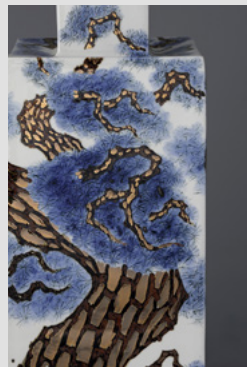
| CONTENTS



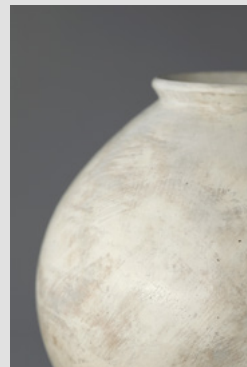
KIM SE-YONG
김세용
8p



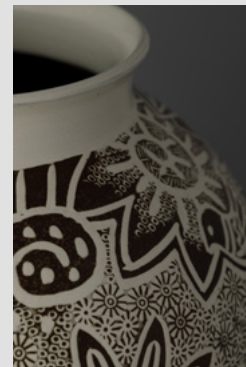
KIM PAN-KI
김판기
20p



KIM HYUN-JONG
김현중
26p



MIN SEUNG-KI
민승기
36p



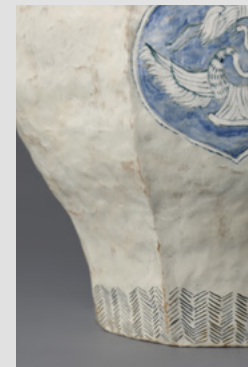
PARK RAE-HEON
박래헌
42p



SEO KWANG-SOO
서광수
52p



SHIN WON-DONG
신원동
58p



YON HO-KYUNG
연호경
62p



WON SEUNG-SANG
원승상
68p



YU YONG-CHEOL
유용철
74p



LEE KYU-TAK
이규탁
80p



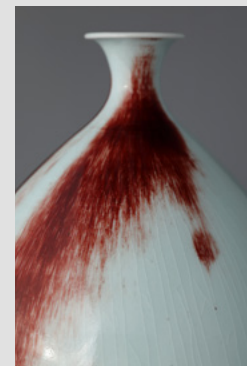
LEE SONG-AM
이송암
88p



LEE HYANG-KOO
이향구
92p



JUNG SE-WOOK
정세욱
102p



HAN DO-HYUN
한도현
110p

KIM SE-YONG

김세용

Kim Se-yong is a Korean Ceramic Master who has dedicated the past 50 years of his life to the study of the celadon technique and the creation of extremely intricate open-work pieces. The artist's breathtaking works show technical perfection and not only preserve the outstanding tradition of Goryeo dynasty celadon, but also embrace contemporary sensibilities. Never feeling overwhelming, Kim's works represent the excellence of Korean contemporary celadon.

Selected Exhibitions

- 2020 Collect, London, UK
- 2017 Constancy and Change in Korean Traditional Craft, La Triennale di Milano, Milano, Italy
- 2016 "Colors and Forms of Korean Ceramics" Exhibition, Museo Internazionale delle Ceramiche Faenza, Faenza Italy
- 2007 "Tea Culture and Contemporary Ceramics" Exhibition, Fondation Baur Musée des Arts d'Extrême-Orient, Geneva, Switzerland

Selected Collections

Museo Nazionale d'Arte Orientale, Guiseppe Tucci, Rome, Italy
Queen Elizabeth II, UK
Dalai Lama, Tibet





청자 국화문 이중투각화 병
Celadon Bottle with Double
Openwork Chrysanthemum Design

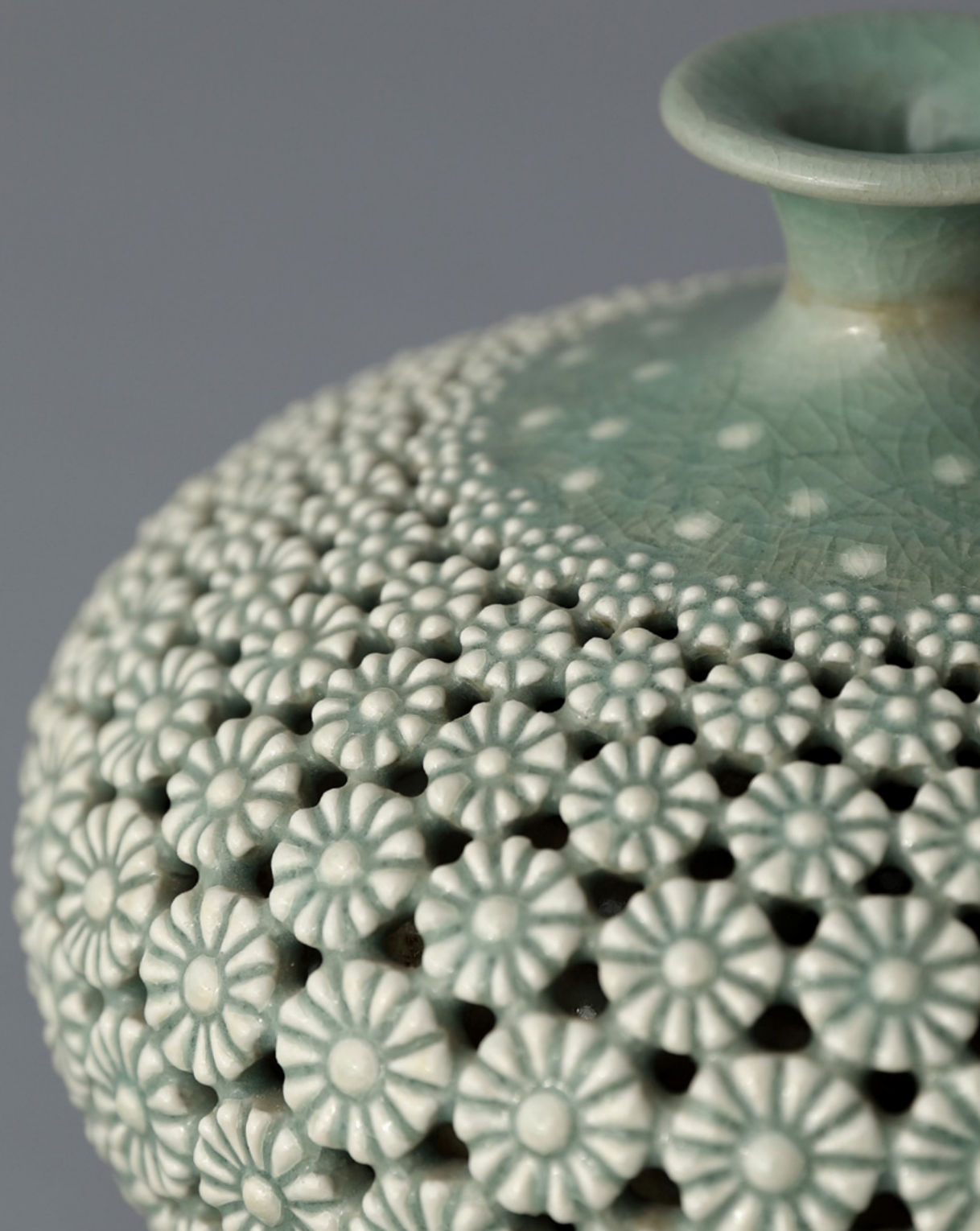
Celadon clay, white clay, celadon
glaze, 1260°C reduction firing,
14x30cm, 2019

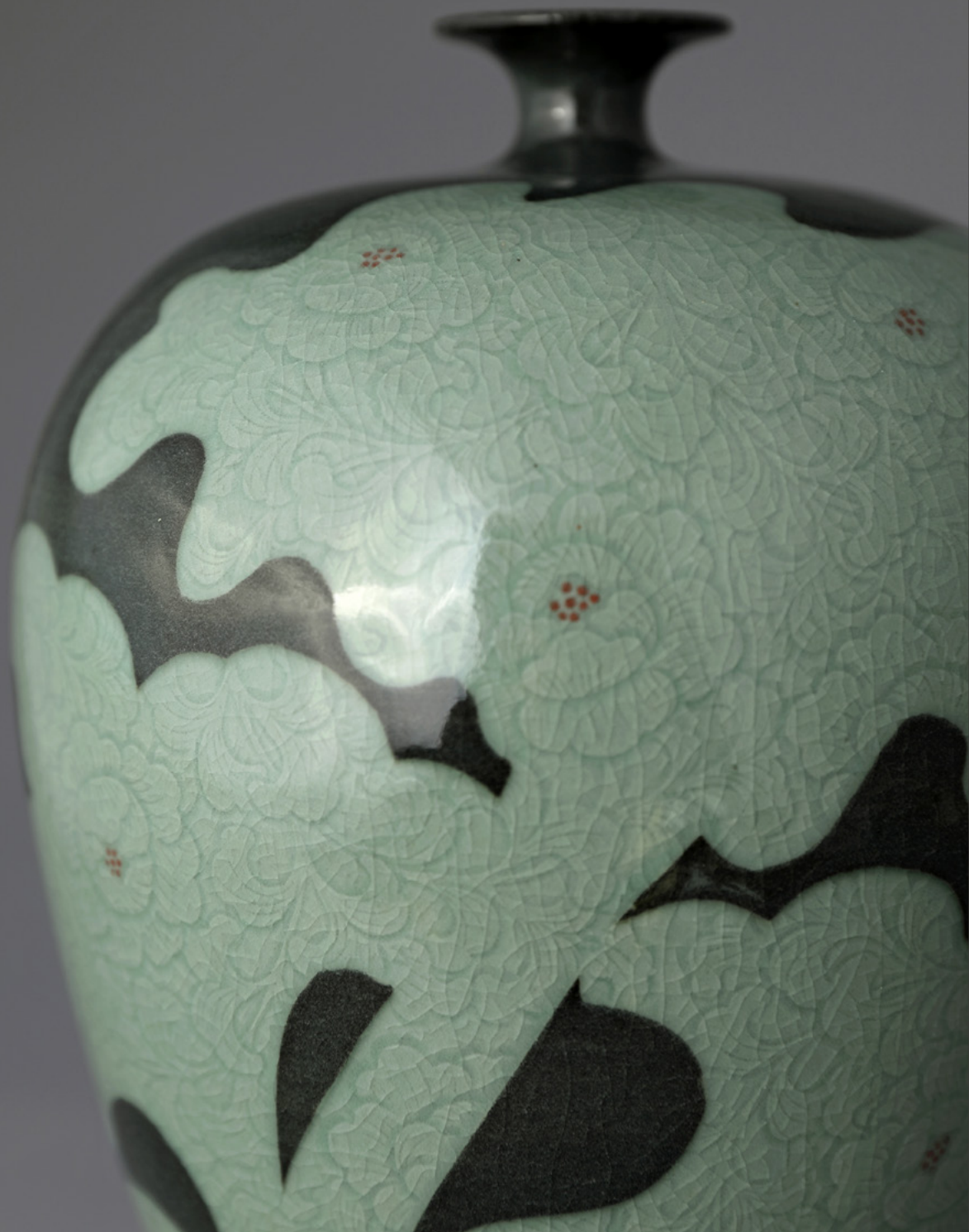




청자 국화문 투각 납작호
Celadon Jar with Double Open-
work Chrysanthemum Design

Celadon clay, white clay, celadon
glaze, 1260°C reduction firing,
16x13cm 2020





청자 목단 박지문 긴 호
Celadon Sgraffito Bottle
with Peony Decoration

Celadon clay, black clay, celadon
glaze, 1260°C reduction firing,
19x27cm, 2000



청자 설경 긴 호
Celadon Vase with Snowy
Scenery Decoration

Celadon clay, white clay, celadon
glaze, 1260°C reduction firing,
23x26cm, 1999



청자 설경 야경 호 SET
A Pair of Celadon Vases with
Snowy Night Scene Decoration

Celadon clay, black and white clay,
celadon glaze, 1260°C reduction
firing, 13x21cm, 1999



청자 설경호
Celadon Jar with
Snowy Scenery Design

Celadon clay, white clay, celadon
glaze, 1260°C reduction firing,
236x23cm, 2000

KIM PAN-KI

김판기

“Tradition is not only the external shape that we see, but also in the spirit sustaining the shape”.

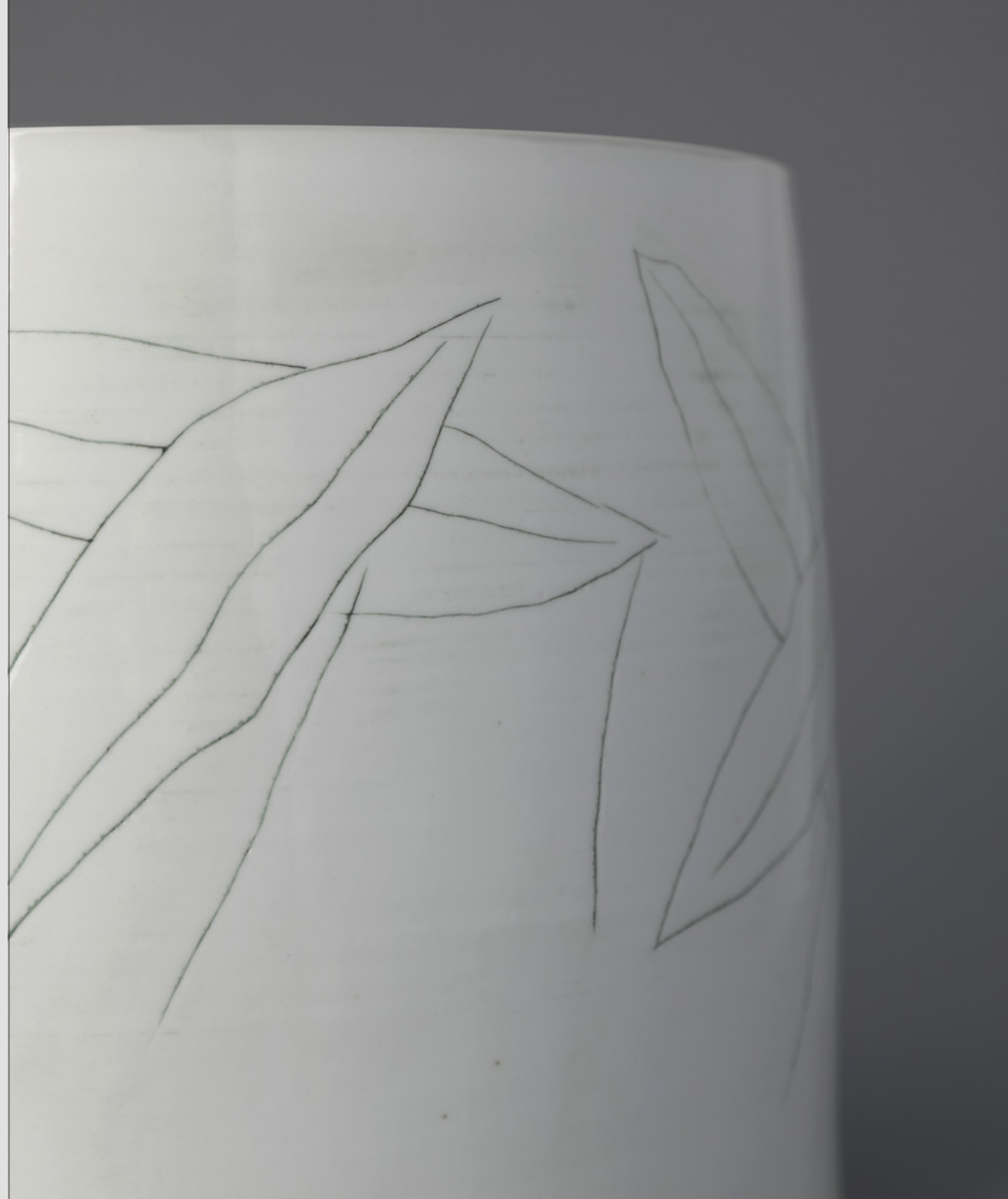
Kim Pan-ki is a proud Icheon Ceramic Master whose long career has made him a skilled potter capable of applying a number of skills in the production of his works. He created his signature style by combining ancient techniques and contemporary aesthetics. This combination of traditional elements and modern sensibilities give his pieces timeless beauty and charm.

Selected Exhibitions

2018-20 Collect, London, UK
2017 Constancy and Change in Korean Traditional Craft, La Triennale di Milano, Milano, Italy
2015 Korea Modern ceramic exhibition, Musée des Artes Décoratifs, Paris, France
2014 Korea Ceramic exhibition in Stuttgart, Wurttemberg State Museum in Old Castle, Stuttgart, Germany

Selected Collections

Shigaraki Ceramic Cultural Park, Koka-shi, Japan
Jingdezhen Ceramic Museum, Jiangxi, China





백자 상감초문 발
Large Celadon Vase with
Inlaid Leaves Decoration

White Porcelain, transparent glaze,
1260°C reduction firing, 30x24cm,
2020



청자 상감 초문 발
Large Celadon Vase with
Inlaid leaves Design

Celadon clay, celadon
glaze, 1260°C reduction firing,
25x30cm, 2020



달항아리
Moon jar

White Porcelain, transparent glaze,
1260°C wood kiln reduction firing,
58x59cm, 2020



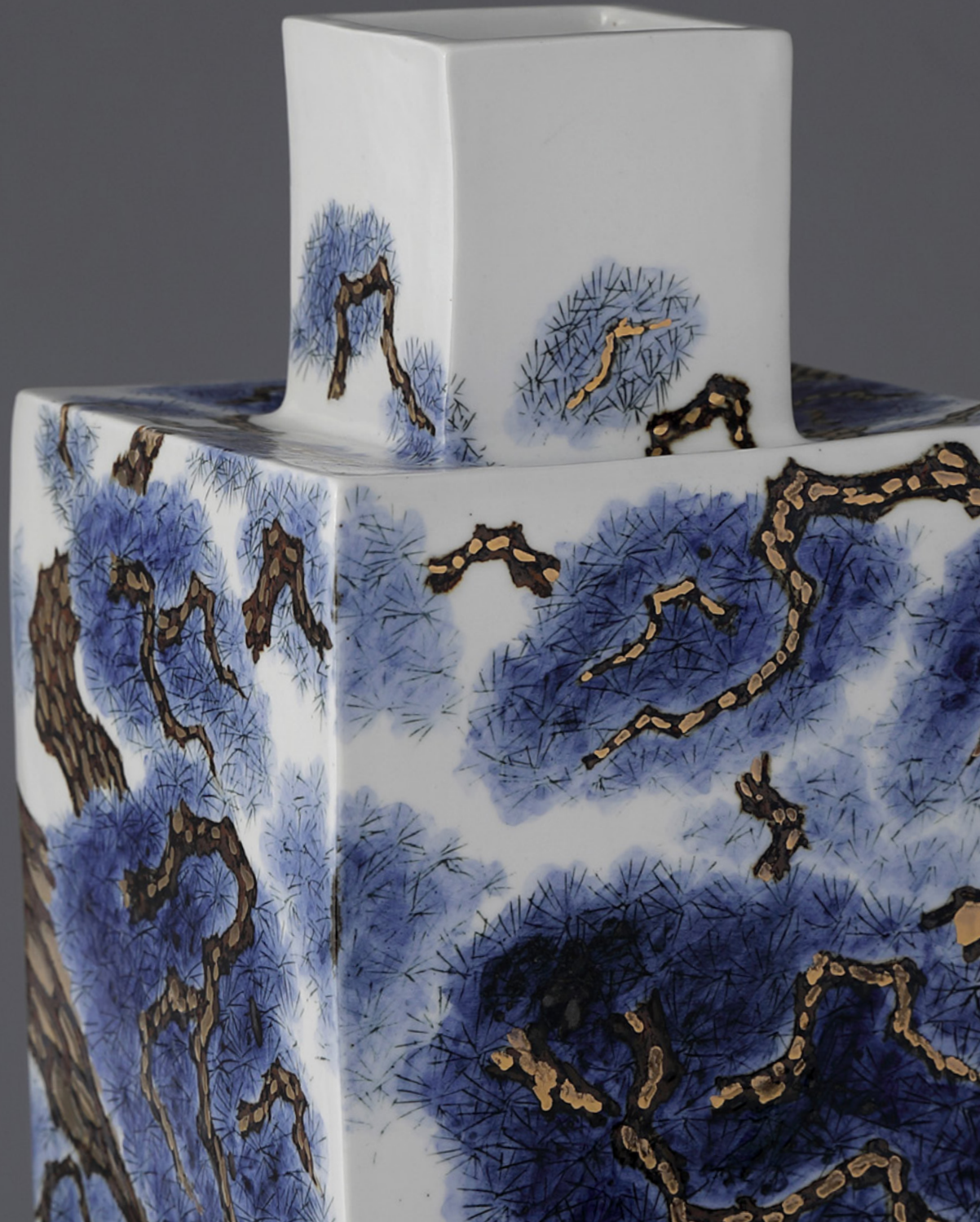
KIM HYUN-JONG

김현종

Kim Hyun-jong, who majored in fine art, is a painter whose canvas is porcelain. In his pieces, the merits of both ceramic and painting works are explored. Using a traditional inlay technique, the artist achieves a subtlety and simplicity that could not be expressed by brushwork. The trees and flowers, as well as landscapes that the artist has been portraying for ten years enable the viewer to experience the calm and warm perspective that he holds towards the world.

Selected Exhibitions

2019 Cheongju Craft Biennale, Cheongju, Korea
2017 Busan International Art Fair, Busan, Korea
2016 Art Santa Fe Fair, Santa Fe, USA





백자청화소나무각병
White Porcelain Bottle
with Pine Tree Decoration

White porcelain, cobalt, iron glaze, transparent
glaze, 1250°C reduction firing,
16x41cm, 2019



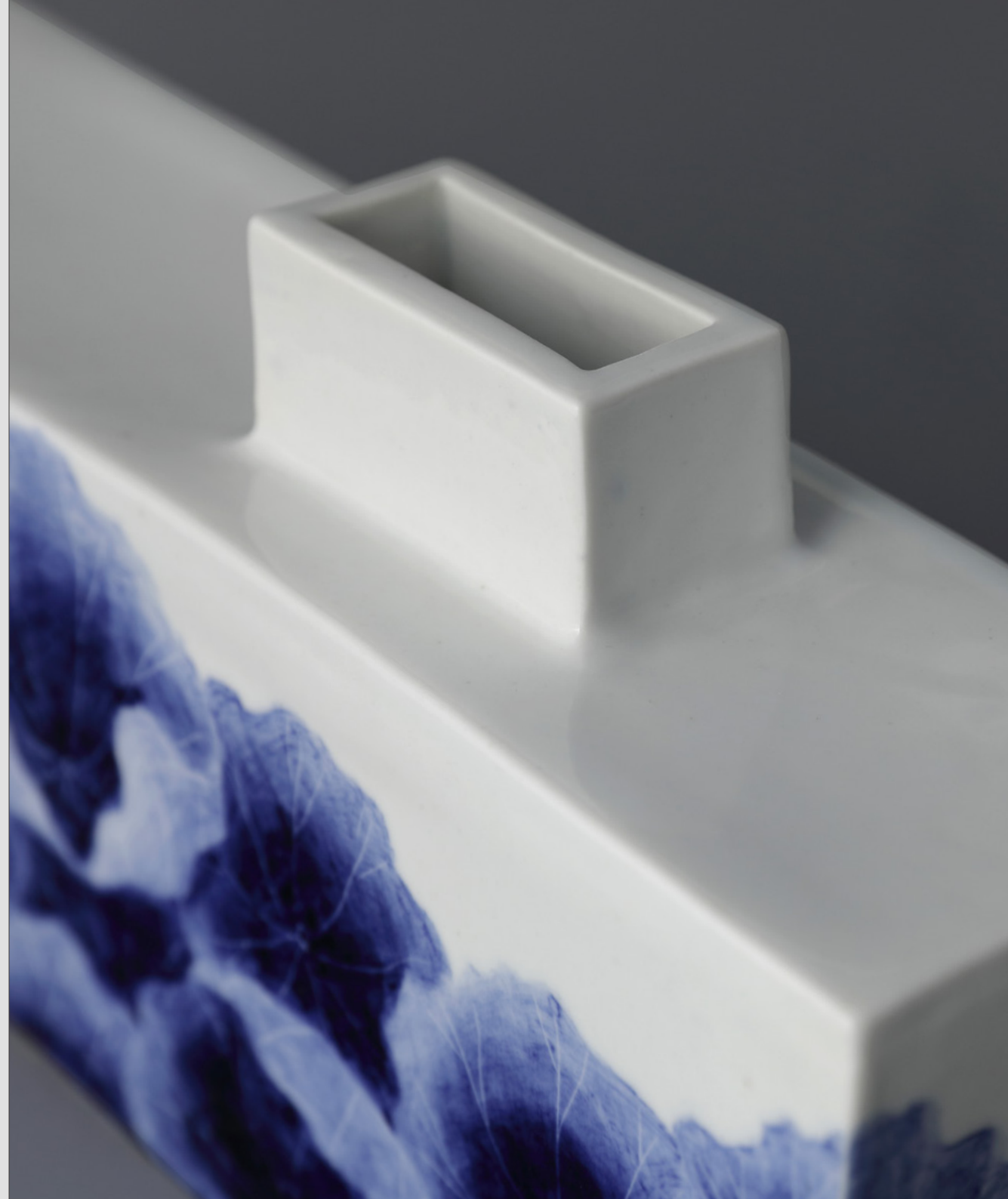
백자청화소나무각병
White Porcelain Bottle
with Pine Tree Decoration

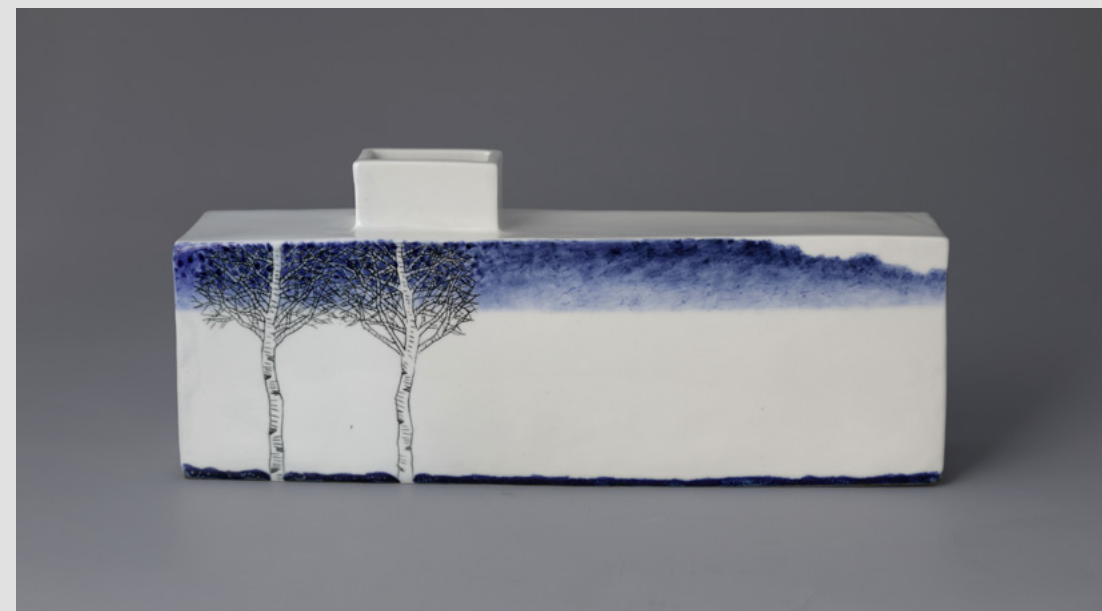
White porcelain, cobalt, iron glaze, transparent
glaze, 1250°C reduction firing,
19.5x51cm, 2018



백자청화연잎문각화병
White Porcelain Vase
with Lotus Leaf Decoration

White porcelain, cobalt,
transparent glaze, 1250°C reduction
firing, 36x7.5x16cm, 2019





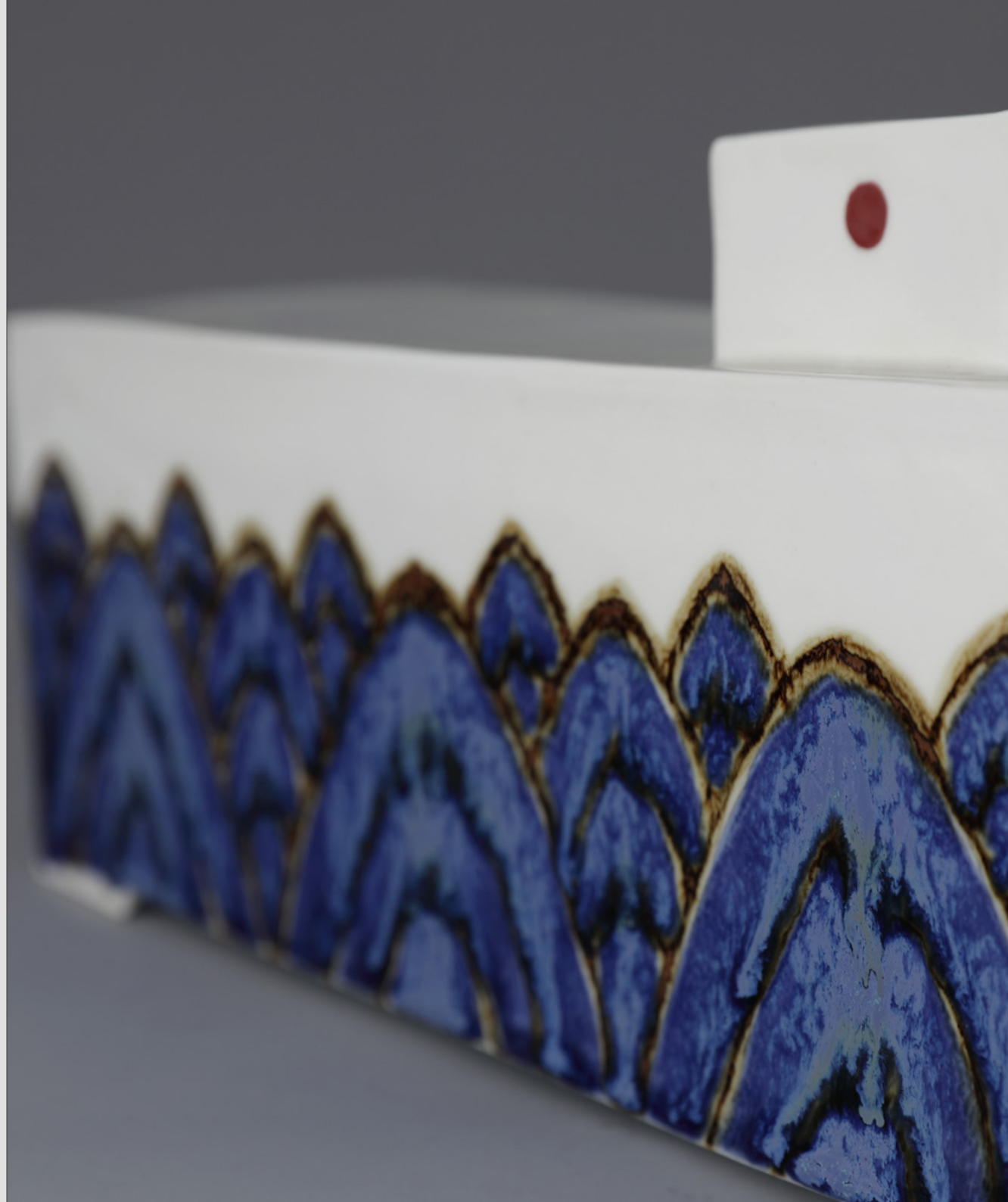
백자청화풍경화병
White Porcelain Vase with Cobalt
Landscape Decoration

White porcelain, cobalt,
transparent glaze, 1250°C reduction
firing, 36x7.5x16cm, 2020



백자청화산문각화병
White Porcelain Vase
with Mountain Decoration

White porcelain, cobalt,
transparent glaze, 1250°C reduction
firing, 33x9.5x16cm, 2018



MIN SEUNG-KI

민승기

“When ceramic works leave the potter, then they soon become objects within one’s space”.

This quote shows the artist’s outlook on the journey a ceramic piece embarks on once delivered to someone.

Min Seung-ki works within the buncheong tradition, drawing on the free expressive potential of white slip and on the Goryeo wares-inspired celadon glaze. It is then the process of firing that determines the character of the texture, leading to the creation of outstanding pieces.

Selected Exhibitions

2020 Collect, London, UK

2019 “2ceramists” Exhibition, Chin Chin pottery gallery, Tainan, Taiwan

2019 “Take the old creates a new” Exhibition, Charm-Learn Studio, Bangkok, Thailand

Selected Collections

2010 Icheon World Ceramic Centre, Icheon, Korea

2006 The Museum of Joseon Royal Kiln, Gwangju, Korea





분청 귀얄 달항아리
Buncheong Moon Jar
with White Slip Decoration

Buncheong clay, white clay
transparent glaze, 1250°C reduction
firing, 37x42cm, 2020



분청귀얄옹충호
Buncheong Jar with
White Slip Decoration

Buncheong clay, white clay
transparent glaze, 1250°C reduction
firing, 20x30cm, 2020



PARK RAE-HEON

박래헌

Park Rae-heon has earned the title of Icheon Ceramic Master. The artist specialized in the traditional technique called buncheong, embracing the characteristic muted colours and figurative decoration. Park is also inspired by nature and his practice is guided by a desire to create works that bridge the gap between generations, hence pieces that don't simply replicate the past but that also embrace contemporary sensibilities.

Selected Exhibitions

2020 Collect, London, UK

2018 Salon International Du Patrimoine Culturell, Carrousel du Louvre, Paris, France

2017 "Korea-China Ceramicist" Exchange Exhibition, Changnan Museum, Jingdezhen, China





분청화조문호
Large Buncheong Vase
with Flower and Bird Design

Buncheong clay with inlaid
decoration under transparent glaze.
1260°C reduction firing, 39x35cm, 2020



분청산문호
Buncheong Jar with
Mountain Design

Buncheong clay with inlaid
decoration under transparent glaze.
1260°C reduction firing, 34x35cm, 2019



분청산수호
Buncheong Jar with
Mountain and Fall Design

Buncheong clay with inlaid
decoration under transparent glaze.
1260°C reduction firing, 33x31cm, 2018





분청사슴문분주
Buncheong Large Bowl
with Deer Decoration

Stoneware, buncheong technique with inlaid
decoration under transparent glaze.
1260°C reduction firing, 12x43cm, 2000





분청운산문호
Buncheong Vase with
Cloudy Mountains Decoration

Stoneware, Buncheong technique with inlaid
decoration under transparent glaze.
1260°C reduction firing, 35x37cm, 2020



분청화조문호
Large Buncheong Vase
with Flower and Bird Design

Buncheong clay with inlaid decoration under
transparent glaze, 1260°C reduction
firing, 35x40cm, 2020

SEO KWANG-SOO

서광수

Seo Kwang-soo is an artist whose accomplishments and unparalleled abilities led his exquisite white porcelain moon jars to be designated as a Cultural Treasure. The artist himself was bestowed the titles of 14th Ceramic Master of Korea and Intangible Cultural Treasure (No. 41) of Gyeonggi province. Seo has dedicated his life to the production of ceramics and meticulously controls the whole process of realisation of his works, from sourcing and extracting the clay to the firing stage. He embraces ancient and traditional techniques, including the use of a pinewood kiln, to create his outstanding works of art.

Selected Exhibitions

- 2019 Collect, London, UK
- 2017 Jingdezhen International Ceramic Fair, Jingdezhen, China
- 2017 Constancy and Change in Korean Traditional Craft 2017, La Triennale di Milano, Milano, Italy
- 2016 Colors and Forms of Korean Ceramics, Museo, Internazionale delle Ceramiche, Faenza, Italy
- 2015 Tradition 韓, Fabriano Forum 2015, Fabriano, Italy

Selected Collections

- Fitzwilliam Museum, Cambridge, UK
- Museo Internazionale delle Ceramiche, Faenza, Italy
- Linden-Museum, Stuttgart, Germany
- Jingdezhen Ceramics Museum, Jingdezhen, China
- The National Museum of Russia, Saint Petersburg, Russia
- The Museum of Oriental Ceramics, Osaka, Japan

달항아리
Moon Jar

White porcelain,
transparent glaze, Kaolin, 1280°C
wood kiln firing, 40x40cm, 2020





청화백자팔각매화문호
Blue & White Porcelain Octagonal
jar with Apricot Flower Decoration

White porcelain, cobalt,
transparent glaze, 1280°C wood kiln
firing, 37x35cm, 2015



황청자항아리
Yellow Celadon Round
Vase

Celadon clay, Kaolin, celadon
glaze 1280°C wood kiln firing,
42x42cm, 2016



SHIN WON-DONG

신원동

Shin Won-Dong believes the foundation of Korean traditional pottery to be flexibility and restrained expression. Potted in separate halves, joined together, and exposed to the fire of the kiln, his pieces come out in an assortment of unusual, ambiguous shapes. The artist is heavily inspired by the Joseon Dynasty moon jar's unique sense of 'simplicity' that radiates from its elegant beauty. Though Shin follows traditional methods of manufacture, he does not shape the rim and foot in straight, linear lines, instead choosing to express the pots in curves, as he continues to define and develop his own world of art.

Selected Exhibitions

2019 1000 vases paris 2020, galerie joseph, Paris, France

2018 URNEN, european ceramic work centre, Oisterwijk, Netherland





달항아리
Moon Jar

White porcelain,
transparent glaze, 1250°C reduction
firing, 35x32cm, 2020



YON HO-KYUNG

연호경

Yon Ho-kyung is drawn to the simplicity of the buncheong ware, the authenticity of the inlay technique and the improvised, free-spirited nature of the pinching technique. In order to create pottery that embraces both the past and present, she does not restrict herself to particular materials or techniques, but instead tries out new, unconventional combinations. Thanks to this, there is a sense of nostalgia and wit that underpins the works of the artist, as well as hidden, unexpected twists. Taking inspiration from her past and daily life, she explores traditional paths, but also manages to incorporate her own individuality to produce 'interesting' pottery.

Selected Exhibitions

2019 BUKAK Ceramic Artist Group Exhibition, Charm-Learn Studio, Bangkok, Thailand
2018 london START art fair by Kunst1, Saatchi gallery, London, UK





분청 쌍학문 항아리
Buncheong Jar with Twin
Cranes Decoration

Stoneware, buncheong
technique, cobalt, glaze, 1250°C
reduction firing, 30x35cm, 2020





분청 학문 각항아리
Buncheong Jar with
Crane Decoration

Stoneware, buncheong
technique, cobalt, glaze, 1250°C
reduction firing, 33x45cm, 2020

WON SEUNG-SANG

원승상

Icheon Ceramic Master Won often depicts dragons, the ten longevity symbols, plum trees and bamboo that commonly appear in Joseon Dynasty paintings. His technique for drawing the dragon is particularly remarkable, as he finishes it in one brush stroke. He tirelessly polishes his painting skills in order to express the elegance and humour of traditional Korean painting.

Selected Exhibitions

2019 Salon International Du Patrimoine Culturel, Carrousel du Louvre, Paris, France

Selected Collections

Icheon Municipal Museum, Icheon, Korea
NTS Icheon District Office, Icheon, Korea
Korea Film Museum of MBC, Seoul, Korea





청화백자호랑이호
White Porcelain Vase with Tiger
Design in Underglaze Cobalt Blue

White porcelain decorated with cobalt oxide
and red pigment, transparent glaze,
1250°C reduction firing, 44x46cm, 2015



청화백자용문호
White Porcelain Vase with Dragon
design in underglaze cobalt blue

White porcelain decorated with cobalt oxide,
transparent glaze, 1250°C reduction firing,
35x44cm, 2018



청화백자당초문접시
White and Blue Porcelain Plate
with Arabesque Design

White porcelain decorated with cobalt oxide,
transparent glaze, 1250°C reduction firing,
30x4cm, 2018



YU YONG-CHEOL

유용철

Yu Yong-cheol embraces the buncheong technique and creates outstanding pots decorated with blooming, stamped flowers or dramatic glazes. The artist has been focusing on this technique, which was the principal ceramic form between the celadon ware of the Goryeo dynasty and the iconic moon jars of the Joseon dynasty, for over 30 years. He has embraced its characteristic earthy colours, mixed with white slip and dotted by the impurities present in the kiln.

Selected Exhibitions

2018 Collect, London, UK

2017 SOFA Art Fair, Chicago, Illinois, USA

2013 Icheon: Reviving the Korean Ceramics Tradition, American Museum of Ceramic Art, Pomona, California, USA

Selected Collections

American Museum of Ceramic Art, Pomona, California, USA

The State Museum of Oriental Art, Moscow, Russia

Embassy of the Republic of Korea, Yangon, Myanmar





천목요변달항아리
Moon Jar
with Cheonmok Glaze

Stoneware, sancheong clay,
1250°C reduction firing,
36x40cm, 2014



분청달항아리
White Slip-brushed
Buncheon Moon Jar

Stoneware, buncheon technique, white slip,
glaze, 1250°C reduction firing,
50x55cm, 2015



분청인화문대호
Large Buncheong Round
Jar with Stamped Decoration

Stoneware, buncheong technique, transparent
glaze, 1250°C reduction firing,
63x61cm, 2019



LEE KYU-TAK

이규탁

Lee Kyu-tak specialises in the buncheong technique. The artist embraces ancient shapes, colours and techniques, such as inlay stamping and sgraffito, which date back to the 15th and 16th century when the Joseon dynasty was reigning in Korea. Lee's approach to buncheong and his research on the subject has led the artist to develop a distinct aesthetic for his pieces, capable of intriguing the viewers with their qualities and charm.

Selected Exhibitions

2019 Collect, London, UK
2018 Salon International Du Patrimoine Culturel, Carrousel du Louvre, Paris, France
2012 Solo Exhibition, Takashimaya Department Store, Tokyo, Japan

Selected Collections

National Museum of Korea, Seoul, Korea
Museo Nacional de las Culturas del Mundo, Mexico City, Mexico



회령유 항아리
Global Jar with Hoi-
Ryung Style Glaze

Stoneware, Mixed glaze,
1280°C reduction firing,
34x30cm, 2020



분청박지 목단금장문 항아리
Buncheong Sgraffito Jar
with Golden Peony Decoration

Stoneware, buncheong
technique, Gold, 1250°C wood kiln
firing, 29x26cm, 2019



분청사기상감 보리문 항아리
Buncheong Jar with
Inlaid Barley Decoration

Stoneware, buncheong
technique, 1230°C reduction firing,
38x38cm, 2019



회령유 각 병
Rectangular Bottle with
Hoi-Ryung Style Glaze

Stoneware, Mixed glaze, 1280°C
wood kiln firing, 40x16x33, 2019





분청 덩병 다완
Buncheong Yido Tea
Bowl

Stoneware, buncheong
technique, 1230°C wood kiln firing,
14x7.3cm, 2019

LEE SONG-AM

이송암

Lee Song-am's works show a modern, even architectural, aesthetic, created by a deep, dense black colour and trimmed surfaces. The artist starts working on the wheel and then trims and twists the body of the pots. As a result, the pieces present unique yet atypical shapes and are reminiscent of the distinct quality of Goryeo and Joseon ceramics covered in a black glaze.

Selected Exhibitions

2020 Collect, London, UK

2019 Korea Ceramic Exposition, Jingdezhen International Ceramic Fair Center, Jingdezhen, China

2016 Solo exposition, Jibokdeuk Gallery, Seoul, South Korea

Selected Collections

Victoria and Albert Museum, London, UK





흑유각용총호
Faceted Vase
with Black Glaze

Stoneware, black glaze, 1250°C
reduction firing, 37x46cm, 2020



흑유각항아리
Faceted Vase
with Black Glaze

Stoneware, black glaze, 1250°C
reduction firing, 20x25cm, 2020

LEE HYANG-KOO

이향구

Icheon Ceramic Master Lee Hyang-koo has explored the beauty and traditions of Korean ceramics for the last fifty years. He has mastered the whole process of pottery making from the raw materials to firing in a kiln. Most of his works begin with drawing and incising traditional patterns onto porcelain. His ambition is to make people appreciate true value and beauty of Korean ceramics.

Selected Exhibitions

2019 "Masters" exhibition, Tongin gallery, Seoul, Korea

2018 Salon International Du Patrimoine Culturel, Carrousel du Louvre, Paris, France

Selected Collections

UNESCO, Paris, France

Shanghai Art Collection Museum, Shanghai, China

American Museum of Ceramic Art"AMOCA", Pomona, USA

The World Ceramic Center, Icheon, Korea





백자이중투각불상문호
Double Open-work Porcelain Vase
with Buddha Decoration

White porcelain,
transparent glaze, 1250°C reduction
firing, 42x38cm, 2000



백자이중투각칠보문호
Double Open-work Porcelain
Vase with Floral Decoration

White porcelain,
transparent glaze, 1250°C reduction
firing, 42x38cm, 2005



백자무광이중투각호
Double Open-work Porcelain
Vase with Floral Decoration

White porcelain,
transparent glaze, 1250°C reduction
firing, 34x31cm, 2002





백자흑상감모란문투각호
White Porcelain Vase with Black
Persimmon and Peony Decoration

White porcelain, black matt glaze,
reduction firing, 30x43cm, 2003



백자이중투각모란문호
Double Open-work Porcelain Vase
with Peony Design

White porcelain,
transparent glaze, 1250°C reduction
firing, 26x29cm, 2019



JUNG SE-WOOK

정세욱

In his works, Jung Se-wook not only explores the beauty of white porcelain, but also wishes to reflect on the topic of social integration within modern society. The artist gives his works a spherical form and then decorates them with geometrical patterns and letters from the Korean writing system (hangeul) using traditional inlay and sgraffito techniques. Finally, Jung achieves a variety of textures through different glazes, leading to the creation of pots which share a similar form, but different characters.

Selected Exhibitions

- 2020 Collect, London, UK
- 2019 "Ceraspace, include space", G-ceramic fair, AT Center, Seoul, Korea
- 2019 "using" Group exhibition, Gallery Space Of B, Seoul, Korea
- 2018 "Korean Artist", Group exhibition, Life-Seeding Gallery, Taipei, Taiwan





백자청화구형항아리
White Porcelain Jar

White porcelain, cobalt, iron-painted, transparent
and matt glaze, 1250°C reduction firing, 23x21cm,
2020



백자 구형항아리
White Porcelain Jar

White porcelain, matt
glaze, 1250°C reduction firing,
22x20cm, 2020



백자청화한글상감 구형항아리
White Porcelain Jar

White porcelain, cobalt, transparent and matt
glaze, 1250°C reduction firing,
22x20cm, 2020



백자철화구형항아리
White Porcelain Jar

White porcelain, iron painted, transparent and
matt glaze, 1250°C reduction firing,
22x22cm, 2020



백자 구시리즈
White Porcelain sphere
Series (various sizes)

White porcelain, cobalt, transparent glaze, matt
glaze, 1250°C reduction firing,
9x9cm, 2020

HAN DO-HYUN

한도현

Throughout his whole career, spanning over 40 years, Han Do-hyun has worked exclusively with the traditional, wood-fired kiln. Reduction firing in a traditional kiln requires exceptional skills, although some aspects cannot be fully controlled, leading to the creation of absolutely unique pieces of mesmerising hues. The bright and intense copper-red shows an enormous variety of shades, making these pieces gorgeous works of art.

Selected Exhibitions

2020 Collect, London, UK

2019 "Firewood Kiln Pottery" Special Exhibition, Hangaram Art Museum of Seoul Arts Center, Seoul, Korea

2014 "Han Do Hyun's Porcelain" Exhibition, Lee-Hyung Art Center, Seoul, Korea

2012 "Han Do Hyun's Porcelain" Exhibition, Gebert Contemporary Art Gallery, Santa Fe, USA





백자진사요변 장병
White Porcelain Elongated Bottle
in Underglaze Copper-Red

Kaolin, clay, pine and oak ash, red
copper oxide, 1300~1500°C wood
kiln reduction firing, 19x43cm, 2020



백자진사요변장병
White Porcelain Elongated Bottle
in Underglaze Copper-Red

Kaolin, clay, pine and oak ash, red
copper oxide, 1300~1500°C wood
kiln reduction firing, 19x45cm, 2020



백자진사요변 장병
White Porcelain Elongated Bottle
in Underglaze Copper-Red

Kaolin, clay, pine and oak ash, red
copper oxide, 1300~1500°C wood
kiln reduction firing, 19x45cm, 2020





백자진사요변 장화병
White Porcelain Long Vase in
Underglaze Copper-Red

Kaolin, clay, pine and oak ash, red copper oxide,
wood fired, 1300~1500°C reduction firing,
33x44cm, 2020





백자진사요변 통형 병
White Porcelain Elongated Bottle in
Underglaze Copper-Red

Kaolin, clay, pine and oak ash, red
copper oxide, 1300~1500°C wood kiln
reduction firing, 20x29.5cm, 2020



백자진사요변어형주병
White Porcelain Bottle in
Underglaze Copper-Red

Kaolin, clay, pine and oak ash, red
copper oxide, 1300~1500°C wood
kiln reduction firing, 33x44cm, 2020



백자진사요변 등근화병
White Porcelain Vase in
Underglaze Copper-Red

Kaolin, clay, pine and oak ash, red
copper oxide, wood fired, 1300~1500°C
reduction firing, 14,5x14.5cm, 2019





백자진사요변호
White Porcelain Jar in
Underglaze Copper-Red

Kaolin, clay, pine and oak ash, red copper oxide,
1300~1500°C wood kiln reduction firing,
23x16.5cm, 2020



백자진사요변 장화병
White Porcelain Elongated bottle in
Underglaze Copper-Red

Kaolin, clay, pine and oak ash, red copper oxide,
wood fired, 1300~1500°C reduction firing,
9.5x20cm, 2020




ORGANIZER

ICHEON CITY HALL

Enquiries about research,
for all enquiries about Icheon Ceramic,
please contact:

Icheon City Hall
Culture & Art Division, Craft team
40 Buak-ro Icheon-si Gyeonggi-do, 17379, Republic of Korea

jsoohee@korea.kr

 @icheon_ceramic

PROMOTER

HAN COLLECTION

Han Collection was founded in 2006. It is a London-based art gallery that specializes in traditional and contemporary Korean art. At Collect 2021 it will be showing work by a number of Korean artists, focusing especially on ceramics.

Han Collection is delighted to be collaborating with Icheon City, designated as a UNESCO Creative City in the field of Crafts and Folk Art, which has played a key role in developing modern ceramics and preserving traditional Korean techniques.


For sales enquiries and further information,
please contact:

Han Collection
33 Museum St, Holborn, London WC1A 1LH, UK

info@hancollection.co.uk

Tel. +44 (0)7951 746614

www.hancollection.co.uk

 @hancollection.london

COLLECT 2021

The International Art Fair for Modern Craft and Design

26 February - 2 March, 2021

ICHEON CERAMIC BY HAN COLLECTION

33 Museum St, Holborn, London WC1A 1LH, UK

ONLINE ART PLATFORM : ARTSY

www.artsy.net

만든이

발행처 | 이천시

발행인 | 엄태준

기획 | 김시훈 문예관광과

총괄진행 | 임선미 공예팀

편집 | 정수희 공예팀

프로모터 | 한 컬렉션

글 | 정수희

번역 | 박진수, 피터체어, 페데리카 롬타

사진 | 예 스튜디오

그래픽디자인 | 스튜디오 흥단

© 이 책의 저작권은 이천시에 있습니다.

본지에 수록된 글과 사진은 이천시

서면 허가 없이 사용 불가합니다.

CONTRIBUTORS

Published by Icheon City Hall

Publisher | Eam Tai-joon

Directing | Kim Si-Hun, Culture & Art Division

Administration | Rim Seon-mi, Craft Team

Editing | Jung Soo-hee, Craft Team

Promoter | Han Collection

Text | Jung Soo-hee

Translation | Park Jin-soo, Peter Chare, Federica Lonta

Photography | Ye Studio

Graphic Design | Studio Hongdan

© 2019 ICHEON CITY HALL All Rights Reserved.

This material may not be published, broadcast, rewritten, or redistributed in any form without the written permission of Icheon City Hall.